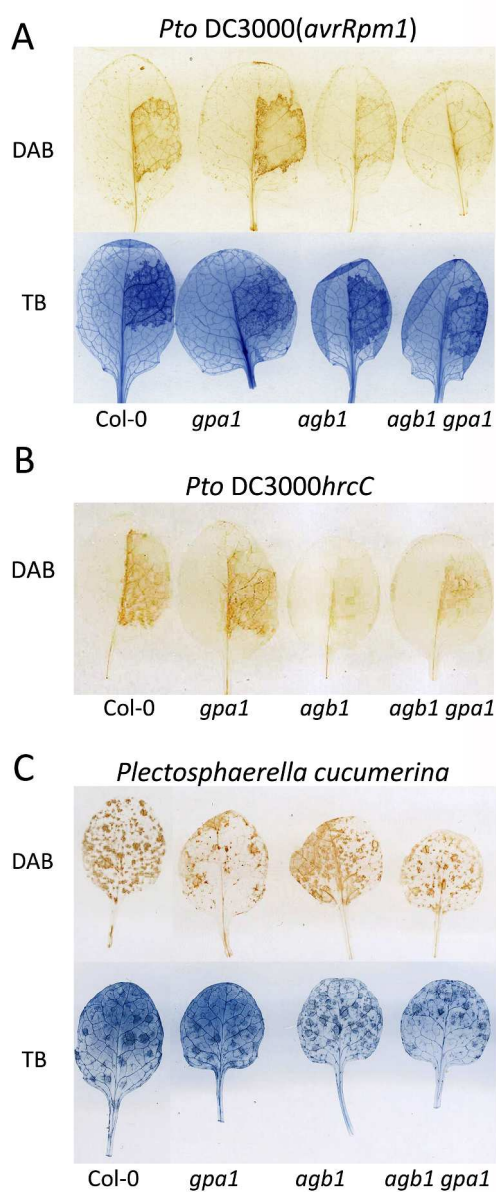


Supplemental Figure 1. Quantification of bacterial growth on the heterotrimeric G protein mutants after injection with 105 cfu ml⁻¹ of avirulent strain *Pto* DC3000(*avrRpt2*). Values represent the mean \pm SE of 4 replicates. Asterisks indicate significant differences compared to wild type Col-0 ($P < 0.01$; ANOVA).

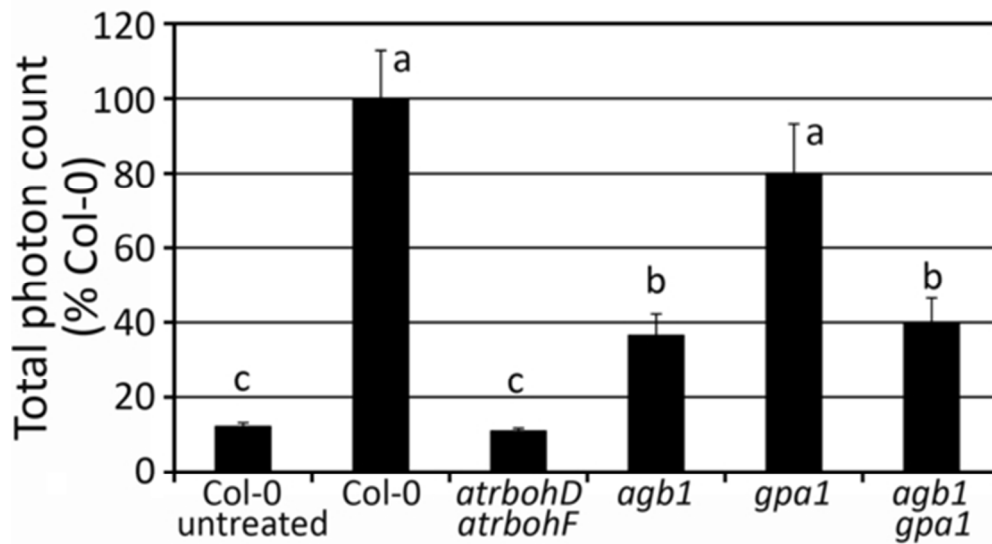
Experiments were repeated 3 times with similar results.

44x24mm (300 x 300 DPI)



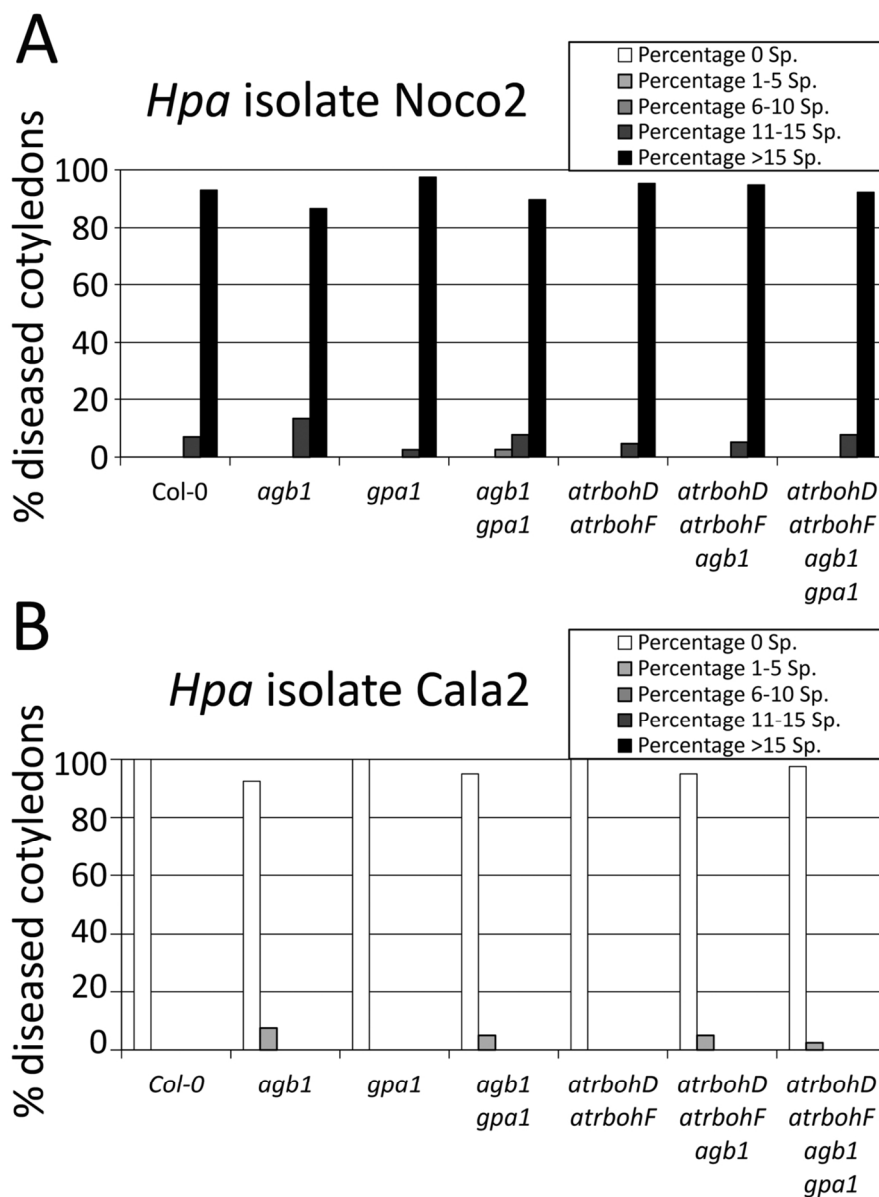
Supplemental Figure 2. ROS production and cell death in the heterotrimeric G protein mutants after pathogen infection. A, Diaminobenzidine (DAB, top) and trypan blue (TB, bottom) staining of leaves from 4 week old plants of the genotypes listed, 7 hours after injection of 2.5×10^7 cfu ml⁻¹ of *Pto DC3000(avrRpm1)*. B, DAB staining of leaves from 4 week old plants of the genotypes listed, 10 hours after injection of 2.5×10^7 cfu ml⁻¹ of *Pto DC3000hrcC*. C, DAB (top) and TB (bottom) staining of leaves from 3.5 weeks old plants of the genotypes listed, 24 hours after spraying with spores of *P. cucumerina* (4×10^6 spores ml⁻¹).

206x508mm (300 x 300 DPI)



Supplemental Figure 3. *agb1* displays lower H₂O₂ accumulation in response to a bacterial PAMP. H₂O₂ production was measured in a luminol-based assay on leaf discs from 4 weeks old plants of the listed genotypes triggered by 100 nM flg₂₂ (except Col-0 untreated).. Values are calculated as percent of the total amount of photons emitted by the Col-0 wt control (relative light units during a 30-min period after treatment). Values are presented as means \pm SE (n=16). Different letters indicate significant differences (P < 0.05; ANOVA).

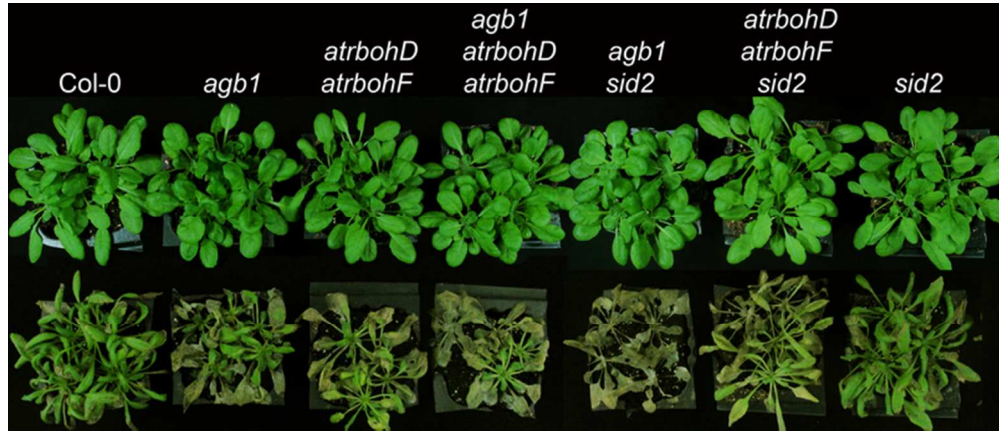
48x27mm (300 x 300 DPI)



Supplemental Figure 4. Sporangiophore formation on the heterotrimeric G protein mutants. A, B, 10 day old seedlings were inoculated with 5×10^{-4} ml $^{-1}$ sporangia of *Hpa* isolates Noco2 (A) and Cala2 (B).

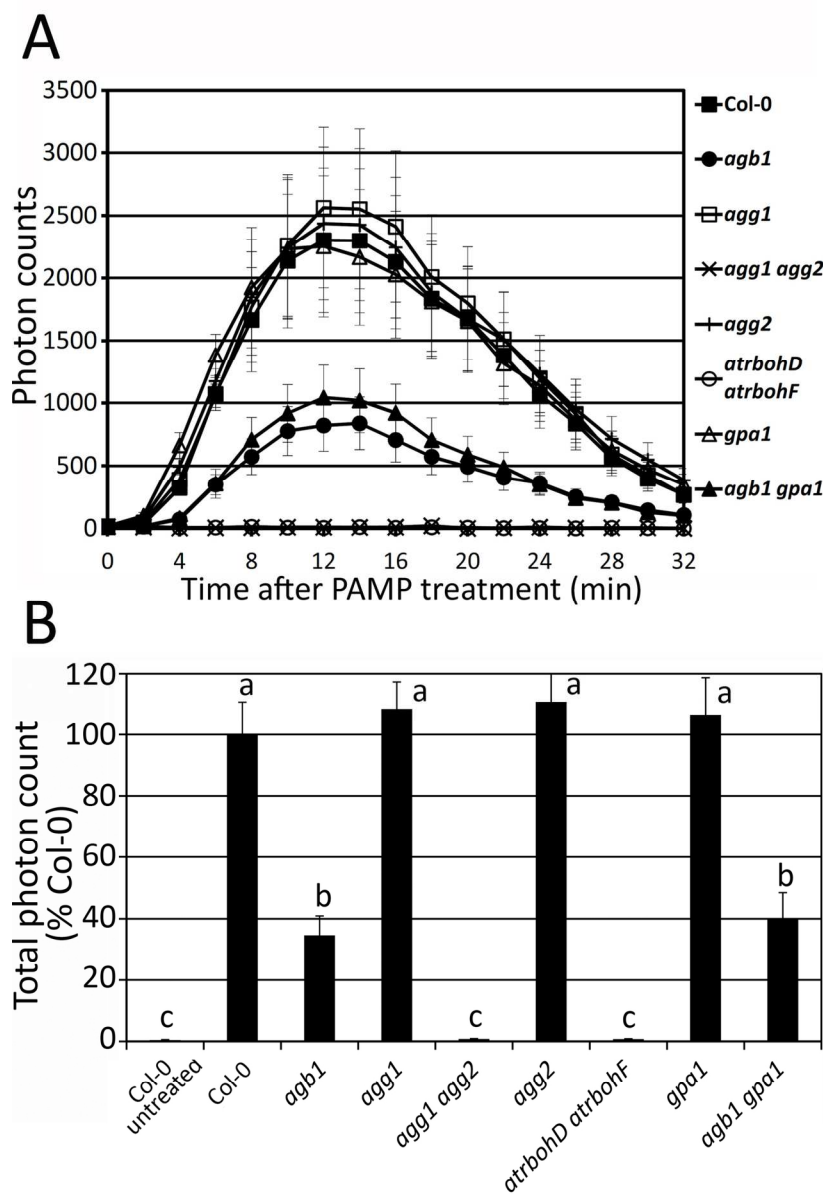
Sporangiophore (Sp) production was quantified at 5 dpi on 40-60 cotyledons per genotype. Experiments were repeated 2 times with similar results.

114x155mm (300 x 300 DPI)



Supplemental Figure 5. *agb1 sid2* display enhanced disease symptoms compared to the individual mutants in response to *Plectosphaerella cucumerina*. Symptoms of 3 week old plants of the genotypes listed, 7 days after spray inoculation with a water control (top) and 4×10^6 spores/ml of *Plectosphaerella cucumerina* (bottom).

68x29mm (300 x 300 DPI)



Supplemental Figure 6. The double mutant *agg1 agg2* do not accumulate H₂O₂ in response to the bacterial PAMP flg₂₂. A, H₂O₂ production measured in a luminol-based assay using leaf discs from plants of the listed genotypes after treatment with 100 nM flg₂₂. Values are means \pm SE (n = 16). The experiment was repeated twice with similar results. B, Quantification of total H₂O₂ production from a luminol-based assay on leaf discs from 4 weeks old plants of the listed genotypes triggered by 100 nM flg₂₂ (except Col-0 untreated) over a 30 minutes period. Values are calculated as percent of the total amount of photons emitted by the Col-0 wt control (relative light units during a 30-min period after treatment). Values are presented as means \pm SE (n=16). Different letters indicate significant differences (P < 0.05; ANOVA).
123x181mm (300 x 300 DPI)